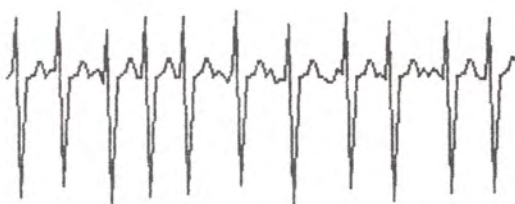




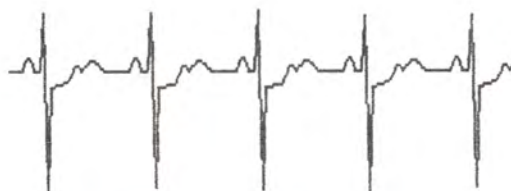
EKG TEACHING

The "EKG Teaching" disk teaches EKG rhythm strip interpretation at a beginning level, with some "pathology pattern" recognition which can be of benefit to those already knowledgeable. There are teaching programs for EKG parts, rhythm recognition, and abnormality recognition. After the teaching programs, the user can test his knowledge with quizzes.

EKG patterns are drawn on screen, with important features pointed out for the user. The beginner can, for example, learn about RSR prime waves, depressed ST segments, and TU waves. The intermediate user can review recognition of V-tach, atrial fibrillation, and AV block. The advanced user can learn to recognize the telltale signs of hypocalcemia, hyperkalemia, and hypothermia.



An irregular baseline and irregularly spaced QRS complexes without P waves means atrial fibrillation. AV block slows the rate down. Hit **RETURN**:



- A. hypothermia B. hypokalemia
C. hypocalcemia D. hyperthermia

YOUR ANSWER: B

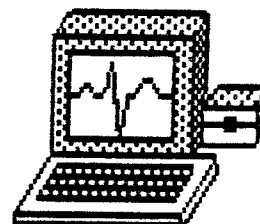
The disk includes quizzes with feedback to reinforce learning. It's great for pathology recognition "beyond ACLS," such as hypokalemia, hypercalcemia, etc. However, it cannot teach certain complicated rhythm disturbances or subtle abnormality recognition because of the limitations of computer screen plotting. But it's an excellent beginning for those not already trained in EKG interpretation.

Mad Scientist Software

2063 North 820 West, Pleasant Grove, UT 84062
(801) 785-3028

From Mad Scientist Software...

EKG TEACHING



by Bruce Argyle MD

For Atari ST, Atari XL/XE, Apple IIc/IIe, and IBM/Compatible computers

800/XL/XE series require BASIC, 48K RAM

IBM/Compatibles require color graphic capability, DOS 2.0 or higher

Copyright 1986 Bruce Argyle

NOTE: These instructions are designed to be inserted into the "Cardiac Arrest!" manual.

INTRODUCTION: "EKG Teaching" is a tool for learning basic EKG rhythm strip interpretation. Within the limits of computer plotting, it teaches the user to recognize EKG parts and rhythms, and to recognize the effects of electrolyte abnormalities. In the ACLS teaching series by Mad Scientist Software, EKG Teaching is used before progressing on to "ACLS Protocols".

START-UP: Please make a backup copy as soon as possible. For your convenience, "EKG Teaching" is not copy-protected. You may not, however, copy the disk for the purpose of "sharing" the program.

Atari ST: You can use the "EKG Teaching" disk as-is by cold-starting the computer with the disk in drive A, then clicking on the "ekg.prg" icon. Alternatively, you can move the entire "ekgteach" folder (after cold-starting, the folder is found by clicking once on the "close" box of the window) to ramdisk, hard disk, or double-sided disk.

Atari XL/XE: Place the EKG Teaching disk in the drive, then turn on the computer. Atari 800 and 1200XL users should insert the BASIC cartridge first. 800XL and XE users should NOT press the OPTION key. The disk will boot automatically to the main menu.

Apple IIc/IIe: Place the disk in the drive, then turn on the computer. The program will execute automatically.

IBM/Compatibles: Insert the system disk into drive A, and boot MS-DOS. At the "A:>" prompt, type "START" and press RETURN. The program will then load and execute. Most users will, however, want to create an autoboot disk. First format a blank disk as a "system" disk (see your user's manual). Then copy each file from the program disk to your new system-formatted disk (you can omit the "start.bat" file if disk space is critical). The disk is then ready to boot the program automatically, either on power-up or on pressing the CTRL-ALT-DEL key combination.

PROGRAM SELECTION: From the main program selector menu, you can choose a subject as a tutorial or a quiz. Your choices are EKG parts, EKG rhythms, or EKG pathology interpretation. Simply press the key corresponding to your choice. Some versions require that you follow your choice with the RETURN key.

"EKG Parts" teaches recognition of P, QRS, T, and U waves, ST and PR segments, plus the abnormal forms of these waves and intervals. "EKG Rhythms" teaches basic rhythm recognition. "EKG Pathology" demonstrates the effects of heart attacks, cold, and electrolyte abnormality on the rhythm strip. The quizzes feature multiple choice interpretations of plotted EKG's. After the user answers correctly, feedback is printed.

WHAT'S IT GOOD FOR? "EKG Teaching" has considerable depth. The beginner can, for example, learn about RSR prime waves, depressed ST segments, and TU waves. The intermediate user can review recognition of V-tach, atrial fib, and AV block. The advanced user can learn to recognize the telltale signs of hypocalcemia, hyperkalemia, and hypothermia.

The disk is great for pathology recognition "beyond ACLS," such as hypokalemia or hypercalcemia. However, it cannot teach complicated rhythm disturbances or subtle abnormality recognition because of the limitations of computer screen plotting. It's designed for "quick recognition" of potential problems from the rhythm monitor screen, rather than true 12-lead EKG interpretation.

WHAT ABOUT THE ACLS TEST? Sorry you asked. "EKG Teaching" does well to present certain types of clear-cut EKG's on a standard monitor screen. No computer on earth is capable of duplicating some of the confusing squiggles you'll encounter on the ACLS test. This disk will help you learn, but it's no guarantee you'll pass any test.

HOW ABOUT SERVICE AND DISK UPDATES? The EKG Teaching disk will be improved and updated. Any new disk update, or replacement of a damaged disk, will be available to you for \$6. You must register your disk to qualify for disk updates or user service. Always report your disk serial number in any correspondence.

Mad Scientist Software
2063 North 820 West
Pleasant Grove, UT 84062

801-785-3028